

Faunitaxys

*Revue de Faunistique, Taxonomie et Systématique
morphologique et moléculaire*



Volume 14
Numéro 06

Janvier 2026

ISSN (Print) : 2269 - 6016
ISSN (Online) : 2970 - 4960
Dépôt légal : Janvier 2026

Faunitaxys

*Revue de Faunistique, Taxonomie et Systématique
morphologique et moléculaire*

ZooBank : <https://zoobank.org/79A36B2E-F645-4F9A-AE2B-ED32CE6771CC>

Directeur de la publication, rédacteur, conception graphique et PAO:

Lionel Delaunay

Cette revue ne peut pas être vendue

Elle est distribuée par échange aux institutions (version papier)

et sur simple demande aux particuliers (format PDF)

à l'adresse suivante:

AFCFF (Association française de Cartographie de la Faune et de la Flore)

28, rue Voltaire, F- 42100 Saint Etienne

E-mail: faunitaxys.journal@gmail.com

Elle est disponible librement au téléchargement à partir du site:

<https://faunitaxys.fr/>

La parution de *Faunitaxys* est apériodique

Faunitaxys est indexé dans / *Faunitaxys* is indexed in:

- **Zoological Record**

Articles and nomenclatural novelties are referenced by:

- **ZooBank** (<https://zoobank.org>)

Online Archives:

- **HAL** (<https://hal.archives-ouvertes.fr>)

- **Internet Archive** (<https://archive.org/details/faunitaxys>)

Imprimée sur les presses de SPEED COPIE, 6, rue Tréfilerie, F- 42100 Saint-Etienne

Imprimé le 30 01 2026

On *Lepturgotrichona* Gilmour, 1957 (Coleoptera, Cerambycidae, Lamiinae)

ANTONIO SANTOS-SILVA (1) & SERGIO DEVESA (2,*)

(1) Museu de Zoologia, Universidade de São Paulo, Avenida Nazaré # 481, 04263-000, São Paulo, SP, Brazil.

- toncriss@uol.com.br - Orcid: <https://orcid.org/0000-0001-7128-1418>- ZooBank: <https://zoobank.org/726E502C-0712-4EB7-8737-63D881C96B39>

(2) La Iglesia, 4, 36988 O Grove-San Vicente, Pontevedra, España.

- sergio.devesa@gmail.com - Orcid: <https://orcid.org/0000-0003-4159-4776>- ZooBank: <https://zoobank.org/AD8E9FB4-1249-43B9-B4B3-B633721E4D39>

* Correspondence

Keywords:

Coleoptera;
Cerambycidae;
Lamiinae;
Lepturgotrichona;
Acanthocinini;
New combinations;
Neotropical Region.**Abstract.** – *Lepturgotrichona bordoni* Monné & Martins, 1976 is transferred to *Piezochaerus* Melzer, 1932; *Lepturgotrichona cubaecola* (Fisher, 1942) is transferred to *Lepturgantes* Gilmour, 1957. The original description of *Piezochaerus*, *Lepturgotrichona*, *Lepturgantes*, *Leptrichillus* Gilmour, 1960, and *Lepturges cubaecola* Fisher, 1942, as well as notes on these taxa, are provided.Santos-Silva A. & Devesa S., 2026. – On *Lepturgotrichona* Gilmour, 1957 (Coleoptera, Cerambycidae, Lamiinae). *Faunitaxys*, 14(06) : 1 – 8.DOI : [https://doi.org/10.57800/faunitaxys-14\(06\)](https://doi.org/10.57800/faunitaxys-14(06))ZooBank : <https://zoobank.org/4885D3E1-66B0-46C0-B2D7-32D613BCB94C>

Received: 12/01/2026 – Revised: 23/01/2026 – Accepted: 25/01/2026

Introduction

The tribe Acanthocinini (Coleoptera, Cerambycidae, Lamiinae) comprises a substantial assemblage of Neotropical genera characterized by high morphological diversity and frequently problematic generic boundaries. In particular, the presence, distribution, and form of the elytral setae, together with features of the prothorax, eyes, antennae, and legs, have historically been used to define and separate closely related genera, not always in a consistent manner. As a consequence, several taxonomic proposals based on limited sampling or incomplete diagnoses have resulted in unstable arrangements, successive transfers of species, and conflicting interpretations of generic affinities.

The present work aims to critically re-evaluate some genera in light of their morphological features, based on the direct examination of type material, or through photographs, and specimens from the MZSP and SDPC collections. New combinations are proposed for *Lepturgotrichona bordoni* Monné & Martins, 1976, here transferred to *Piezochaerus*, and for *Lepturgotrichona cubaecola* (Fisher, 1942), transferred to *Lepturgantes*.

Material and methods

The original descriptions of *Piezochaerus*, *Lepturgotrichona*, *Lepturgantes*, *Leptrichillus*, and *Lepturges cubaecola* are reproduced in full and accompanied by critical comments, in order to facilitate access to essential historical information and to allow a more accurate assessment of the taxonomic decisions adopted herein.

References for species are limited to the original description and the first subsequent transfer. Complete bibliographic references can be found on Monné (2024) and Tavakilian & Chevillotte (2025).

The collection acronyms used in the text are as follows:

MZSP – Museu de Zoologia, Universidade de São Paulo, São Paulo, São Paulo, Brazil.

SDPC – Sergio Devesa Private Collection, Pontevedra, Spain.

Results

Generic original descriptions

Melzer (1932) described *Piezochaerus* as follows:

“Corpus depressum, elongato-ovatum, postice attenuatum, tomentosum, elytris setis longis et erectis lineatim ordinatis hirtis; caput inter antenas concavum, fronte brevi, transversa, plana, tuberculis antenniferis basi distantibus; antennae elongatae, tenues, subtus setis raris breviter obsitae, scapo elongato, basim elytrorum attingente, art. 3 scapo brevior; thorax latitudine brevior, usque ad spinas laterales gradatim leniter ampliatus, deinde attenuatus, spinis minutis, retrorsum curvatis, ab angulis posticis modice distantibus; elytra basi thorace vix latiora, elongata, degressa, postice gradatim attenuata, apice obliquiter singulatim truncata, carinis centrobasalibus nullis, lateraliter abrupte deflexae; pedes subelongati, femoribus anticis et mediis clavatis, posticis sensim incrassatis, tarsis posticis elongatis, art. 1.°, 2.° et 3.° simul sumptis multo longiore; prosterni processus inter coxas angustus, retro dilatatus; mesosterni processus vix latior, planus. [Symbol of male] femoribus posticis apicem elytrorum attingentibus, segmento ultimo ventrali truncato, dorsali rotundato. [Symbol of female] femoribus posticis apicem elytrorum haud attingentibus, stylo haud elongato, segmento ultimo dorsali truncato, ventrali emarginato. Pela forma, esse novo genero se aproxima de *Anisopodus* e *Ozineus*, mas difere do primeiro pelos femures posteriores menos compridos e pelas

Reviewers:

Larry G. Bezark (Sacramento, California, USA) - ZooBank: <https://zoobank.org/25C35904-2035-4416-9534-8641C1551196> - Orcid: <https://orcid.org/0000-0003-0165-552X>Josef Vlasak (Schwenksville, PA, USA) - ZooBank: <https://zoobank.org/064F4AA8-377F-44ED-9879-F9238B65301A> - Orcid: <https://orcid.org/0000-0001-7514-0305>

This is an open access article under the terms of the Creative Commons Attribution-NonCommercial-NoDerivs License, which permits use and distribution in any medium, provided the original work is properly cited, the use is non-commercial and no modifications or adaptations are made.

Copyright 2025. The Authors. *Faunitaxys* published by Lionel Delaunay on behalf of the AFCFF (Association française de Cartographie de la Faune et de la Flore).

cerdas dos élitros. De *Ozinieus* elle difere pela ausencia das carenas basaes e da presença das cerdas nos elytros. Taes cerdas se encontram tambem nos generos *Eutrichillus* e *Leptocometes* Bates com os quaes porem o novo genero não pode ser confundido. *Piezochaerus* difere de *Eutrichillus* pela ausencia das carenas basaes dos elytros, e de *Leptocometes* pela forma e pelos espinhos laterales do prothorax. O novo genero é visinho de *Anisopodus*.”

Fisher (1942) described *Lepturges cubaecola* as follows:

“Male.—Rather narrowly elongate, rather strongly depressed above, brownish yellow, with distinct, irregular, dark brown markings; body beneath reddish brown, with the legs brownish yellow, except the tips of the femora and tibiae, which are dark brown. Head subquadrate, and slightly convex in front, feebly narrowed toward apex, with a narrow, longitudinal groove extending from occiput to clypeus, nearly flat between the antennal tubercles, which are not elevated; surface finely, densely granulose, rather densely, uniformly clothed with short, recumbent, yellowish pubescence; eyes separated from each other on the top by one and one-half times the width of the upper lobe. Antennae twice as long as the body, brownish yellow, the segments annulated with brown at apices, and the surface clothed with recumbent, inconspicuous pubescence, with a few short, erect hairs on the underside of the segments. Pronotum one and one-half times as wide as long, narrower at apex than at base, widest near base; sides diverging from apical angles to an acutely triangular tooth at posterior angles; disk moderately convex, broadly, feebly transversely concave along base; surface coarsely, rather densely, irregularly punctate, densely, uniformly clothed with short, recumbent pubescence, which is whitish on the pale areas and dark brown on the dark areas, and ornamented with dark brown markings as follows: A broad vitta on each side along lateral margin, and on each side of the middle a similar vitta, which is connected laterally to an oblique spot. Scutellum broadly triangular, and rounded at apex. Elytra twice as long as wide, slightly wider than pronotum, widest behind middle; sides feebly diverging from humeral angles to behind middle, then arcuately converging to the tips, which are separately oblique internally and feebly, arcuately emarginate; disk feebly flattened; surface finely, densely, uniformly punctate, densely, uniformly clothed with short, recumbent pubescence, with a few short, erect hairs toward the sides, the pubescence whitish on the pale areas and dark brown on the dark areas, and each elytron ornamented with distinct dark-brown markings as follows: A broad, slightly arcuate spot near scutellum; a narrow, irregular vitta extending along lateral margin from humerus to middle, and connected internally to an elongate spot; a broad, interrupted vitta along sutural margin extending from middle to near apex, and connected posteriorly to a broad, irregular spot along lateral margin; and with two oblong spots behind the middle toward lateral margin. Body beneath finely, densely granulose, densely, uniformly clothed with short, recumbent, whitish pubescence; last visible abdominal sternite broadly, feebly, arcuately emarginate at apex; prosternal process narrow between the coxal cavities; femora pedunculate, gradually clavate toward apices, and slightly arcuate. Length 5–7 mm., width 2–2.5 mm. Type locality.—Soledad (Cienfuegos), Cuba. Type.—In the Museum of Comparative Zoology, Cambridge, Mass., No. 23758. Paratype in the United States National Museum, No. 53742. Described from two specimens (one male type). The type was collected during May 1936, and the paratype November 28, 1926, by P. J. Darlington, Jr. This species is allied to *chamaeropsis* Fisher [currently, *Polymitoleiopus chamaeropsis*], but it differs from that species in having the pronotum and elytra ornamented with distinct, dark-brown markings.”

Gilmour (1957) described *Lepturgotrichona* as follows:

“This genus is closely related to *Lepturges* Bates; but is raised for those species with long or erect elytral setae. Of rather small size; elongate ovate. Antennae sparsely setose, chiefly below; slender, very elongate, about twice as long as the body; scape very elongate, moderately swollen. The pronotum transverse, smooth above, only moderately convex, slightly widening posteriorly to a small lateral spine placed at or near the posterior angles. Elytra elongate, widening a little to behind the middle; a little depressed above; smooth; with long or erect setae; apices rounded or feebly truncate. Prosternal protuberance very narrow: (? Mesosternal protuberance narrow); apical ventrite short and rounded apically ([symbol of male]), or slightly elongated and truncate ([symbol of female]), pygidium short and broadly rounded ([symbol of male]) or more elongate and obtusely pointed ([symbol of female]). Legs of moderate length; femora clavate to pedunculo-clavate; basal tarsal segment somewhat elongated. Genotype: *Lepturgotrichona stigmatica* Bates. (1880. Biol. Centr. Amer. 5, 170) Guatemala, Honduras. *Comb. nov.* The genotype of this genus was described as *Lepturges stigmaticus* Bates and is transferred from that genus. The species described as *Lepturges cubaecola* Fisher (1942, *Torraea*, Havana, 10, 36), from Cuba, is also transferred from *Lepturges* Bates because it possesses erect elytral setae, and I place it here for the time being.”

Then, Gilmour (1957) provided a key to species:

“1. The elytra bearing long erect setae; colour reddish-testaceous, the pronotum and elytra with sparse, very small, brown spots which aggregate into maculae behind the pronotal disc and towards the elytral apices; each elytron with a blackish lateral marking, which commences subhumerally, runs a little way along the epipleura and then curves towards the disc, to terminate post-medially without reaching the lateral margin (3.5 mm, Guatemala) *stigmatica* Bates, 1880

– The elytra with a few short erect setae laterally; general colour whitish pubescence on brownish-yellow derm [brownish-yellow integumental areas with whitish pubescence]; each elytron with seven dark brown maculae as follows: – a broad, slightly arcuate macula near the scutellum; a narrow irregular vitta along the lateral margin from humerus to middle and connected internally to an elongate macula; a broad, interrupted vitta along the suture from middle to near apex, which is connected posteriorly to a broad, irregular macula along the lateral margin; and with two oblong post-median maculae towards the lateral margin; the pronotum with dark brown markings as follows: – a broad vitta on each side towards the lateral margin and on each side of the middle a vitta, which is connected laterally to an oblique macula. (5-7 mm. Cuba) *cubaecola* Fisher, 1942”

Gilmour (1957) described *Lepturgantes* as follows:

“Closely related to *Lepturges* Bates from which it is immediately distinguishable through the antennae being twelve (12)—segmented, by which character it also differs from all the other known genera in the tribe Acanthocinini, all of which have eleven-segmented antennae. The genus does not belong to the Saperdini, but belongs in all other characters, so far as I can discern, to the tribe Acanthocinini. Females only are so far known of this genus, but I see no reason for supposing that the male does not also have twelve-segmented antennae. Female: Of not very large size; elongate, fairly narrow. Head with the frons broad and moderately convex; eyes large, strongly convex, strongly emarginate, the upper lobes only moderately separated, the lower lobes about as broad as long, distinctly longer than the genae; antennal tubercles slightly raised, widely separated, slightly broadly concave between. Antennae 12-segmented; very elongate and slender, more than three times as long as the body; scarcely very elongate, reaching the elytral

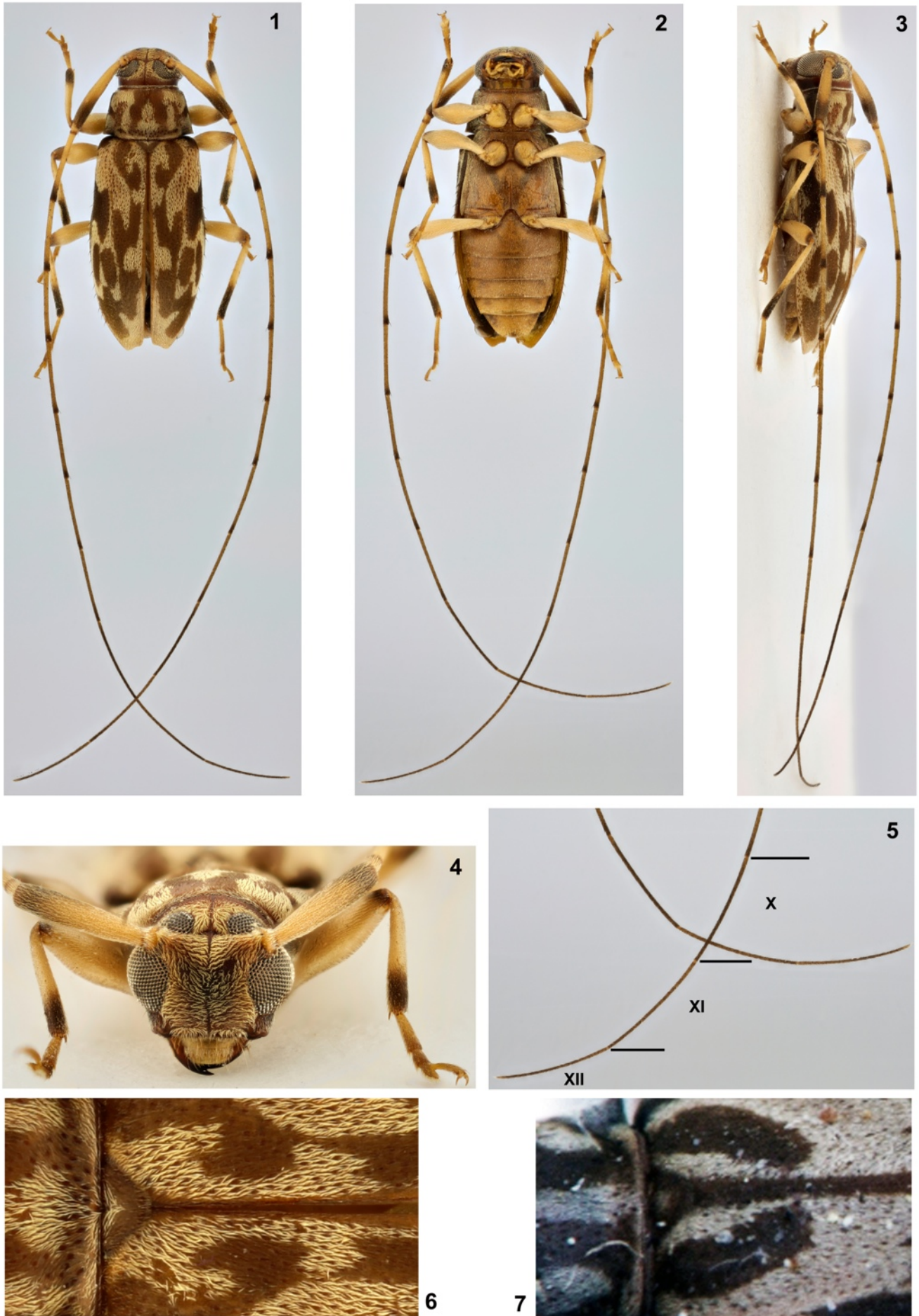


Fig. 1-7. *Lepturgantes* spp.

1-6. *Lepturgantes cubaecola* (Fisher, 1942), male. 1. Dorsal habitus. 2. Ventral habitus. 3. Lateral habitus. 4. Head, frontal view. 5. Distal antennomeres. 6. Dorsobasal region of elytra. 7. *Lepturgantes pacificus* Gilmour, 1960, female holotype, dorsobasal region of elytra.



Fig. 8-11. *Lepturgantes cubaecola* (Fisher, 1942), female.

8. Dorsal habitus. 9. Ventral habitus. 10. Lateral habitus. 11. Distal antennomeres.

base, moderately swollen; third segment about as long as the scape, slightly shorter than the fourth segment, the following two segments more elongate, the next segments decreasing, the three apical segments very elongate; with rather sparse, fairly short, stiff setae, both above and below. Pronotum transverse, trapezoidal, smooth, but not strongly convex above, the lateral spines distinct, of moderate size, placed towards the base, slightly posteriorly directed, strongly emarginate behind to the base. Elytra elongate, rather cuneiform; apices obliquely truncate, slightly emarginate, angles distinct; smooth, slightly depressed above, [each elytron with two long erect setae on the margin towards the apex, these may be absent, — ? generic]. Prosternal protuberance very narrow, not strongly curved; mesosternal protuberance moderately narrow, almost plane, truncate apically; apical ventrite produced into a short ovipositor, which extends a little beyond the elytral apex, its apex broadly emarginate; pygidium fairly elongate, lanceolate, obtusely pointed. Legs moderately elongate and fairly slender; pro- and intermediate coxae moderately strongly globose; femora clavate; tibiae fairly slender, the intermediate grooved externally; tarsi elongate and slender, particularly the intermediate and posterior, the first segment of the posterior

tarsi more than twice as long as the following two segments united. Genotype: *Lepturgantes variegata* gen. nov., sp. nov.”

Gilmour (1960a) described *Leptrichillus* as follows:

“This new genus is probably most closely allied to *Valenus* Casey and *Eutrichillus* Bates from both of which it differs at first glance in the pronotal disc being smooth, without tubercles, amongst other differences, for example from *Eutrichillus* Bates it also differs in lacking centro-basal elytral tubercles and from *Valenus* Casey in both pro- and mesocoxae being almost contiguous. Whilst having something of the facies of *Lepturges* Bates, it differs primarily in the elytra bearing long setae. The only species so far known of this genus is one of the smallest of Neotropical Lamiids, measuring about three millimeters in length. I have not seen a [symbol of male] belonging to this genus. Female: Very small, elongate-ovate. Head with frons large, strongly convex, about quadrate; eyes small, strongly emarginate; lower lobes slightly convex, rounded, slightly shorter than the genae, upper lobes rather short, small, widely separated; antennal tubercles moderately swollen and raised, very broadly V-shaped between. Antennae elongate and fairly slender (presumably eleven-segmented,

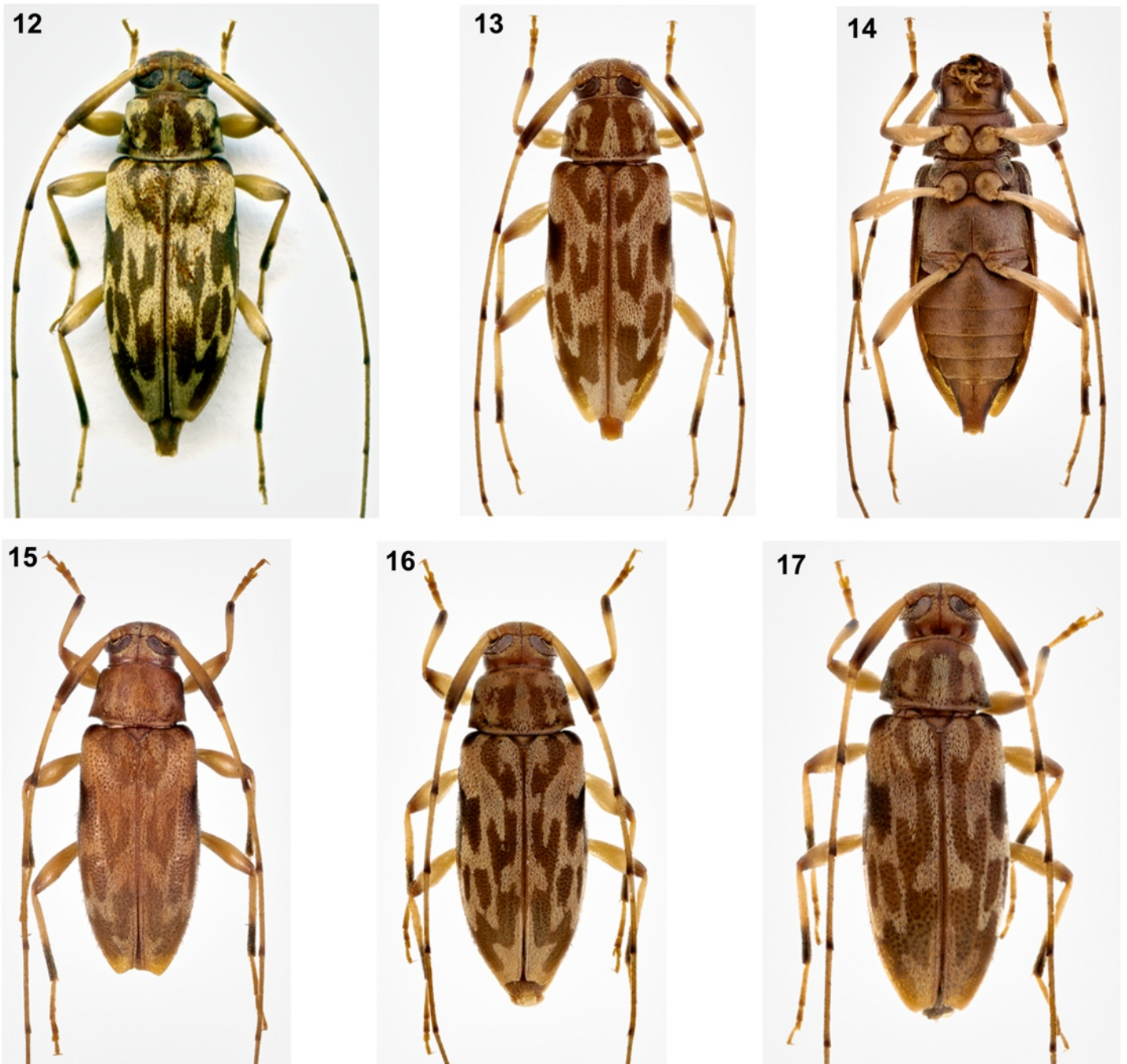


Fig. 12-17. *Lepturgantes cubaecola* (Fisher, 1942).

12. Female, specimen 2, dorsal habitus. 13. Female, specimen 3, dorsal habitus. 14. Female, specimen 3, ventral habitus. 15. Male, specimen 2, dorsal habitus. 16. Male, specimen 3, dorsal habitus. 17. Male, specimen 4, dorsal habitus.

although segments after the tenth missing); a little less than twice as long as the body; scape elongate, not very strongly swollen, not quite extending to the pronotal base, very sparsely setose below preapically; segments two to four sparsely setose below; third segment very slightly longer than the scape, fourth about equal to third, the following segments gradually decreasing (at least to tenth). Pronotum distinctly transverse, broadly and rather strongly rounded laterally and running into a posteriorly directed, small, acute spine on each side at about the basal quarter, strongly constricted thereafter; disc not very strongly convex, smooth. Scutellum rounded. Elytra somewhat elongate-ovate, almost parallel-sided premedially; epipleura vertical, junction with disc rather narrowly rounded; disc rather strongly convex posteriorly, somewhat depressed premedially, smooth; apices rounded; bearing fairly sparse, very elongate,

slender setae. Prosternal process linear, procoxae almost contiguous, much lower than coxae; mesosternal process linear throughout most of its length, mesocoxae almost contiguous, more or less horizontal above, rather declivous anteriorly. Apical (fifth abdominal) ventrite subacuminate, distinctly longer than the preapical, fairly narrowly and feebly emarginate apically, extending a little beyond elytral apex; pygidium moderately narrow, rather narrowly truncate apically. Legs of moderate length and rather robust; femora strongly swollen, anterior clavate, intermediate and posterior pedunculate; tibiae not very elongate, the intermediate grooved externally; tarsi only moderately elongate, first segment of metatarsi shorter than the following two segments united. Male: Unknown. Genotype: *Leptichillus minutus* gen. nov., sp. nov.”

The original description of *Lepturgotrichona bordoni* Monné & Martins (1976) is available from: <https://revistas.usp.br/paz/article/view/211091/193430/>.

Remarks. – Monné *et al.* (2020a) synonymized *Leprichillus* with *Lepturgotrichona*: “However, examination of photographs of the holotypes of *Lepturges stigmaticus* and *Leprichillus minutus*, as well as the original descriptions, shows that these species are synonymous. Accordingly, *Leprichillus* is a junior synonym of *Lepturgotrichona*.”

Currently, *Lepturgotrichona* includes three species: *L. stigmatica*, described by Bates (1881) from Guatemala, known from Mexico, Guatemala, Honduras, Belize, El Salvador, Nicaragua, and Costa Rica; *L. cubaecola*, described by Fisher (1942) from Cuba, which remains known only from this country; and *L. bordoni*, described by Monné & Martins (1976) from Venezuela, which remains known only from this country.

It is essential to point out the following about those species:

1. On *Lepturgotrichona stigmatica* (See photographs on Bezark (2026) and in Santos-Silva *et al.* (2025)):

a. Although it was not mentioned in the original description of the genus, in the original description of *Lepturges stigmaticus*, or in the original description of *Leprichillus*, nor in the original description of *Leprichillus minutus* Gilmour, 1960, the transverse groove near the posterior margin of the pronotum in *Lepturgotrichona stigmatica* is not dorsally delimited, and the coarse punctures continue onto the sides of the prothorax. This feature was already known in 1957 (in the separation between *Lepturges* and *Urgleptes* Dillon, 1956—the latter, currently in the synonymy of *Polymitoleiopus* Lepesme & Breuning, 1955). However, we know that Gilmour’s work was already available before 1957, since the original publication dates from 1955. However, this feature should have been included in the description of *Leprichillus*, as it was already known to Gilmour at that time. It is possible that Gilmour (1960a) did not mention it because the elytra in the species of *Polymitoleiopus* do not have elytral setae. Monné *et al.* (2020a) also do not include this feature in the diagnosis of *Lepturgotrichona*. However, they reported in the key: “The generic allocation of *Lepturgotrichona bordoni* Monné & Martins, 1976, and *L. cubaecola* (Fisher, 1942) needs to be confirmed because the prothoracic shape is very different from that of the type species of the genus;”

b. *Lepturgotrichona stigmatica* bears long, erect setae distributed over the entire surface of the elytra.

2. On *Lepturgotrichona bordoni* (Fig. 18-19):

a. Although this species has erect setae distributed over the entire elytral surface, the posterior pronotal sulcus is dorsally delimited and, consequently, the coarse punctures do not extend onto the sides of the prothorax. This difference between *L. stigmatica* and *L. bordoni* was not mentioned in the description of the latter;

b. Furthermore, in *L. bordoni*, the upper eye lobes are distinctly wider, the distance between them is distinctly shorter, and the metatarsomere I is distinctly longer.

3. On *Lepturgotrichona cubaecola* (Fig. 1-17):

a. The species has erect elytral setae only on the outer margins;

b. The posterior pronotal sulcus is dorsally delimited and, consequently, the coarse punctures do not extend onto the sides of the prothorax;

c. The upper eye lobes are distinctly wider than in *L. stigmatica*, the distance between them is distinctly shorter, and the metatarsomere I is distinctly longer.

d. The most important difference between this species and *L. stigmatica* and *L. bordoni* is the number of antennomeres: 12 in *L. cubaecola*, a feature not mentioned by Fisher (1942), Gilmour (1957), and inferred by Gilmour (1960a), presumably eleven-segmented, although segments after the tenth missing; 11 in *L. stigmatica* and *L. bordoni*.

Based on the differential features above, these three species belong to three different genera. The differences between

Lepturgotrichona and *Pentheochaetes* Melzer, 1932 are questionable. Both genera share the presence of erect setae on the elytra, the absence of a centrobasal crest and humeral carina, the metatarsomere I slightly longer than II–III together, and the lateral tubercles of the prothorax are located on the posterior third. However, the true species of *Pentheochaetes*, considering *P. mysticus* Melzer, 1932, the type species, and *P. turbidus* Melzer, 1934, have sparse, long erect setae on the antennomeres, which are absent in *Lepturgotrichona*. Therefore, we conclude that a full revision of *Pentheochaetes* is needed before eventual final allocation of the species.

Lepturgantes cubaecola (Fisher, 1942), **comb. nov.**

(Fig. 1-17)

Lepturges cubaecola Fisher, 1942: 36.

Lepturgotrichona cubaecola; Gilmour, 1957: 28.

Remarks. – *Lepturges cubaecola* was described from Cuba and remains known only from that island country. It is very similar to *Lepturgantes pacificus*, which was described from Guatemala and is currently recorded from Mexico to Panama. These two species share an almost identical elytral pubescent pattern. However, all specimens of *L. cubaecola* examined, including the holotype, have the central whitish pubescence close to the scutellum hook-shaped. In the specimens of *L. pacificus* studied, the whitish pubescence close to the scutellum is longitudinal.

Interestingly, *Lepturgantes cubaecola*—especially the males—shows considerable variation in the body shape, ranging from stouter (as in the holotype—see photographs on Bezark (2026) and MCZbase (2026)—and Fig. 1) to moderately slender (e.g. Fig. 17). According to Gilmour (1960b), in the description of *Lepturgantes pacificus*: “Several species at present in *Lepturges* Bates subgenus *Chaeturges* Gilmour may possibly belong in the genus *Lepturgantes* Gilmour, on account of the twelve-segmented [antennae] and marginal elytral setae. In *Lepturges* the above described new species would lie close to *fragillima* Bates [*Lepturges fragillima* Bates, 1863, currently in *Lepturges* (*Chaeturges*)], from which it differs at least in the elytra having eight, not seven, dark maculae and the elytral apices straight, not sinuate-truncate.”

Material examined

CUBA

Cienfuegos: Cumanayagua (22°8'58"N 80°12'8"W), VI.1933, 1 female, F. de Zayas leg. (SDPC); V.1948, 1 male, F. de Zayas leg. (SDPC).

Matanzas: Jagüey Grande, San Pedro (22°40'02"N 81°32'59"W), 17.V.2018, 1 male, 3 females, beating on *Citrus sinensis*, S. Devesa leg. (SDPC).

Sancti Spiritus: Topes de Collantes, mirador (21°51'49.52N 80°01'12.86"W), XI.2009, 1 male, 1 female, at fluorescent light, S. Devesa leg. (SDPC); VI.2010, 1 male, 2 females, at fluorescent light, S. Devesa leg. (SDPC); XI.2010, 1 female, at fluorescent light, S. Devesa leg. (SDPC); IX.2011, 1 female at fluorescent light, S. Devesa leg. (SDPC); XII.2011, 1 female at fluorescent light, S. Devesa leg. (SDPC); II.2012, 2 males, 1 female, at fluorescent light S. Devesa leg. (SDPC); IV.2012, 1 female, at fluorescent light, S. Devesa leg. (SDPC).

Piezochaerus bordoni (Monné & Martins, 1976), **comb. nov.**

(Fig. 18-19)

Lepturgotrichona bordoni Monné & Martins, 1976: 73.

Remarks. – The key by Monné *et al.* (2020b) leads *Lepturgotrichona bordoni* to this genus. However, the key contains an error in the alternative of couplet “39:” “Prothorax with lateral tubercles very acute in apex, directed backward... 40,” leading to *Lepturgotrichona*; and “Prothorax with lateral tubercles obtuse or, when acute, directed sideward... 43,” leading to *Piezochaerus* Melzer, 1932. In fact, the

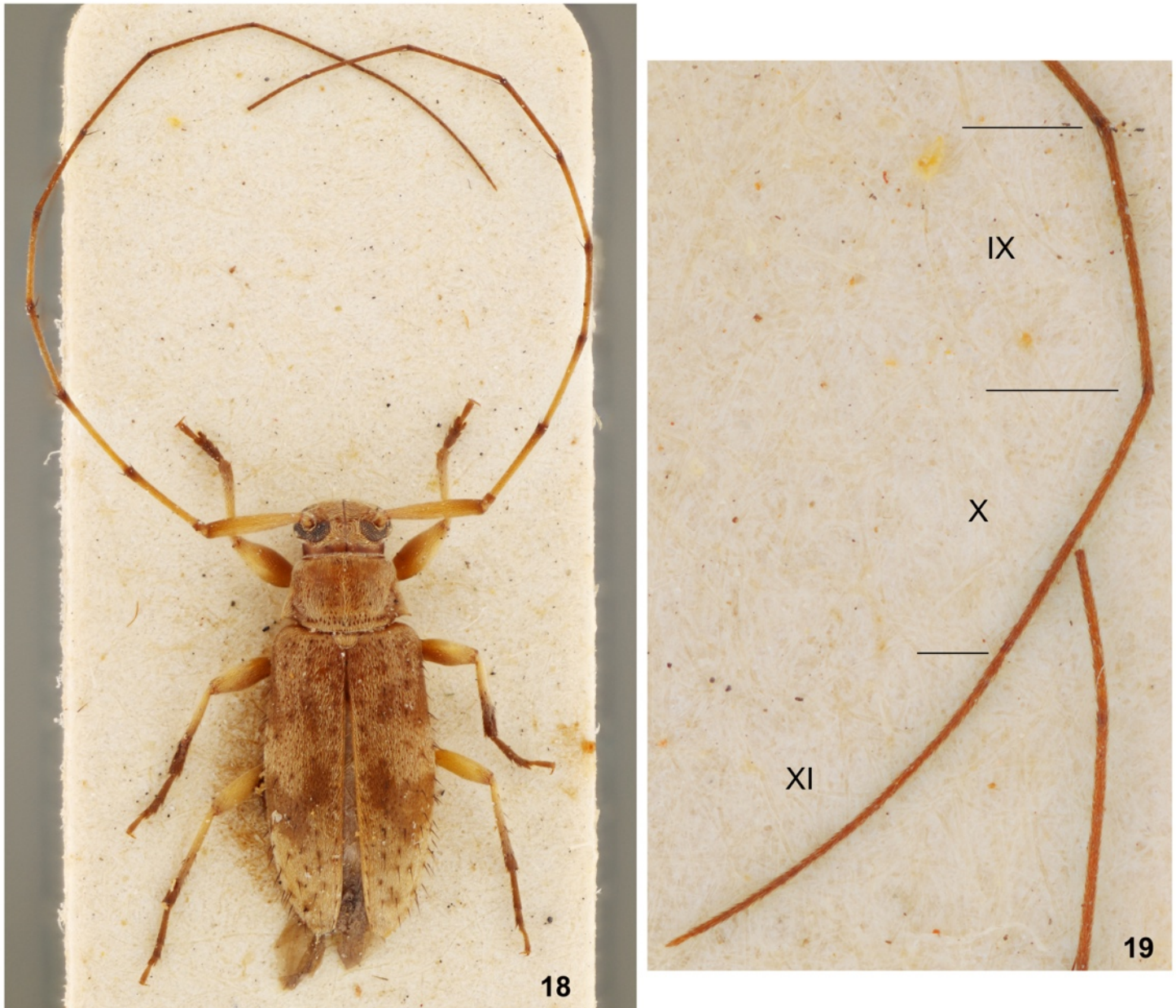


Fig. 18-19. *Lepturgotrichona bordoni* Monné & Martins, 1976, female holotype.

18. Dorsal habitus. 19. Distal antennomeres.

lateral tubercles of the prothorax in the type species of *Piezochaerus*—*P. bondari* Melzer, 1932—are apically acute and directed backward. Unfortunately, the original description of *L. bordoni* did not provide important details. Since the holotype is the only specimen available for study and it is glued to a card, we are unable to examine the ventral morphological features. *Lepturgotrichona bordoni*, at least dorsally, shares nearly all the features present in the type species *Piezochaerus*, including the dorsal sulcus on the posterior region of the prothorax, which does not extend toward the sides of the prothorax. Mermudes (2008) commented about this region of the prothorax in *Piezochaerus*: “Prothorax wider than long, slightly convex; next to the posterior margin, punctation in well-defined transverse row.” However, in both the redescription of the genus and that of the type species, he did not indicate whether the punctures (and the sulcus) do or do not extend toward the sides of the prothorax.

Based on the original descriptions and the photographs of the types available to us, it is not possible to determine whether the posterior pronotal sulcus does or does not extend toward the sides of the prothorax in all species currently included in *Piezochaerus*. However, based on the type species of the *Piezochaerus*, we are transferring *L. bordoni* to this genus.

Material examined

VENEZUELA

Sucre: Cariaco, female holotype, 15.VII.1959, C. Bordon leg. (MZSP).

References

- Bates H.W. 1881. – Longicornia, pp. 153–224. In: Godman, F.D. & Salvin, O., *Biologia Centrali-Americana*. Vol. 5. R.H. Porter and Dulau & Co., London, xii + 525 pp. + 26 pls.
- Bezark L.G., 2026. – A photographic Catalog of the Cerambycidae of the World. New World Cerambycidae Catalog. Available from: <http://bezbycids.com/byciddb/wdefault.asp?w=n/> (accessed 7 January 2026).
- Fisher W.S., 1942. – New West Indian cerambycid beetles, III. *Torreia*, 10: 1-43
- Gilmour E.F., 1957. – On the neotropical Acanthocinini (Coleoptera, Cerambycidae, Lamiinae). Some new genera and species. *Arquivos de Biologia e Tecnologia*, 10(1): 3-36.

- Gilmour E.F., 1960a. – On the Neotropical Acanthocinini. VIII. Three new central american genera and species (Col., Cerambyc., Lamiin.). *Ciencia*, 20(3-4): 89-96.
- Gilmour E.F., 1960b. – On the Neotropical Acanthocinini (Coleoptera, Cerambycidae, Lamiinae). The Genus *Lepturgantes* Gilmour. *Entomologische Blätter für Biologie und Systematik der Käfer*, 56(3): 173-181.
- MCZbase., 2026. – MCZbase: The Database of the Zoological Collections. Available from: <https://mczbase.mcz.harvard.edu/SpecimenSearch.cfm?collection> (Last accessed 7 January 2026).
- Melzer J., 1932. – Novos gêneros e novas espécies de Cerambycideos do Brasil (Col. Cerambycidae). *Revista de Entomologia*, 2(4): 420-434.
- Mermudes J.R.M., 2008. – Revision of *Piezochaerus* (Coleoptera: Cerambycidae). *Revista Brasileira de Zoologia*, 25(2): 309-313.
- Monné M.A., 2024. – Catalogue of the Cerambycidae (Coleoptera) of the Neotropical region. Part II. Subfamily Lamiinae. Available from: http://cerambycids.com/default.asp?action=show_catalog/ (Last accessed 7 January 2026).
- Monné M.A. & Martins U.R., 1976. – Contribuição ao conhecimento dos Acanthocinini (Coleoptera, Cerambycidae, Lamiinae). *Papéis Avulsos de Zoologia*, 30(4): 43-98.
- Monné M.A., Santos-Silva A. & Monné M.L., 2020a. – Key to Mexican and Central American genera of Acanthocinini (Coleoptera, Cerambycidae, Lamiinae) with erect setae on elytral surface, excluding the Caribbean Islands. *Zootaxa*, 4885(1): 1-25.
- Monné M.A., Santos-Silva A. & Monné M.L., 2020b. – Key to South American genera of Acanthocinini (Coleoptera, Cerambycidae, Lamiinae) with erect setae on elytral surface. *Zootaxa*, 4789(2): 523-553.
- Santos-Silva A., Bezark L.G. & Pérez-Flores O., 2025. – Cerambycidae (Coleoptera) from the James Cope collection. Part II: new species and new geographical records. *Faunitaxys*, 13(60): 1-20.
- Tavakilian G.L. & Chevillotte H., 2025. – Titan: base de données internationales sur les Cerambycidae ou Longicornes. Available from: <http://titan.gbif.fr/> (Last accessed 7 January 2026).

Authors contribution ¹

Publisher Correspondence. – DEV
Writing the article. – SAN
Article proofreading. – DEV & SAN
Bibliographic work. – SAN
Material study. – DEV & SAN
Author of the figures. – DEV & SAN

¹ SAN = Antonio Santos-Silva – DEV = Sergio Devesa.

Résumé

Santos-Silva A. & Devesa S., 2026. – A propos du genre *Lepturgotrichona* Gilmour, 1957 (Coleoptera, Cerambycidae, Lamiinae). *Faunitaxys*, 14(06) : 1 – 8.

Lepturgotrichona bordoni Monné & Martins, 1976 est transférée dans *Piezochaerus* Melzer, 1932 ; *Lepturgotrichona cubaecola* (Fisher, 1942) est transférée dans *Lepturgantes* Gilmour, 1957. La description originale de *Piezochaerus*, *Lepturgotrichona*, *Lepturgantes*, *Leptrichillus* Gilmour, 1960 et *Lepturges cubaecola* Fisher, 1942, ainsi que des notes sur ces taxons, sont fournies.

Mots-clés. – Coleoptera, Cerambycidae, Lamiinae, *Lepturgotrichona*, Acanthocinini, nouvelles combinaisons, région néotropicale.

Derniers articles publiés

- Audureau A. & Morvan O., 2025. – Deux nouveaux Lamiinae de Guyane française (Coleoptera, Cerambycidae, Lamiinae). *Faunitaxys*, 13(40): 1 – 3. [https://doi.org/10.57800/faunitaxys-13\(40\)](https://doi.org/10.57800/faunitaxys-13(40))
- Novák V., 2025. – *Bolbostetha bachmaica* sp. nov. (Coleoptera: Tenebrionidae: Alleculinae: Alleculini), a new species of comb-clawed beetles from Central Vietnam. *Faunitaxys*, 13(41): 1 – 4. [https://doi.org/10.57800/faunitaxys-13\(41\)](https://doi.org/10.57800/faunitaxys-13(41))
- Cerda J.-A., 2025. – Ctenuchina de Guyane française (2de partie). Les genres *Euagra-Micragrella-Parastatia* & *Agyrta* (1er article). 17e note. *Faunitaxys*, 13(42) : 1 – 19. [https://doi.org/10.57800/faunitaxys-13\(42\)](https://doi.org/10.57800/faunitaxys-13(42))
- Sabatelli G., Pham P.V., Đàng V. N. & Ahrens D., 2025. – *Dedalopterus huongae* new species from northern Vietnam (Scarabaeidae: Melolonthinae: Leucopholini). *Faunitaxys*, 13(43) : 1 – 4. [https://doi.org/10.57800/faunitaxys-13\(43\)](https://doi.org/10.57800/faunitaxys-13(43))
- Daawia, Warikar E.L., Yando H., Suhartawan B., Foley E.M. & Cumming R.T., 2025. – *Nesiophasma richi* sp. nov., a new massive stick insect species from the island of Biak, Indonesia (Insecta: Phasmatodea). *Faunitaxys*, 13(44) : 1 – 8. [https://doi.org/10.57800/faunitaxys-13\(44\)](https://doi.org/10.57800/faunitaxys-13(44))
- Vitali F., 2025. – The *Glenea* of Sulawesi, with descriptions of three new species (Coleoptera Cerambycidae). *Faunitaxys*, 13(45): 1 – 6. [https://doi.org/10.57800/faunitaxys-13\(45\)](https://doi.org/10.57800/faunitaxys-13(45))
- Chakrovorty A., Háva J. & Bhattacharjee B., 2025. – *Litargus (Litargosomus) arjanbasui* sp. nov.: A new species of hairy fungus beetle (Coleoptera: Tenebrionidae: Mycetophagidae) from West Bengal, India. *Faunitaxys*, 13(46): 1 – 10. [https://doi.org/10.57800/faunitaxys-13\(46\)](https://doi.org/10.57800/faunitaxys-13(46))
- Cumming R.T. & Le Tirant S., 2025. – Golden *Orthomeria* Kirby, 1904; two new species with uncommon coloration (Aschiphasmataceae: Phasmatodea). *Faunitaxys*, 13(47) : 1 – 11. [https://doi.org/10.57800/faunitaxys-13\(47\)](https://doi.org/10.57800/faunitaxys-13(47))
- Ythier E., Chevalier J. & Lourenço W. R., 2025. – Cloud forest scorpions: a new species of *Guyanochactas* Lourenço, 1998 (Scorpiones, Chactidae) from Mount Itoupé in French Guiana. *Faunitaxys*, 13(48): 1 – 9. [https://doi.org/10.57800/faunitaxys-13\(48\)](https://doi.org/10.57800/faunitaxys-13(48))
- Huang J., Liu Z. & Di Z., 2025. – *Isometrus wenjieae* sp. n., a new species of the subgenus *Reddyanus* from China (Scorpiones: Buthidae). *Faunitaxys*, 13(49): 1 – 8. [https://doi.org/10.57800/faunitaxys-13\(49\)](https://doi.org/10.57800/faunitaxys-13(49))

- Barria M.D. & Franco-Salgado J., 2025. – Nueva especie Sudamericana de *Phyllophaga* (*Phytalus*) (Coleoptera: Scarabaeoidea: Scarabaeidae: Melolonthinae: Rhizotrogini) del nororiente de Ecuador. *Faunitaxys*, 13(50): 1 – 6. [https://doi.org/10.57800/faunitaxys-13\(50\)](https://doi.org/10.57800/faunitaxys-13(50))
- Dheurle C., 2025. – Description d'une nouvelle espèce du genre *Neocollyris* Horn, 1901 des Philippines (Coleoptera Cicindelidae). *Faunitaxys*, 13(51): 1 – 3. [https://doi.org/10.57800/faunitaxys-13\(51\)](https://doi.org/10.57800/faunitaxys-13(51))
- Qi Z.-H., Bian C.-Z., Xin F.-Y., Dang V. N., Song H.-T. & Liang G.-H., 2025. – A new subspecies of *Dorcus linwenhsini* Huang & Chen, 2013 from Northern Vietnam (Coleoptera: Lucanidae: Lucaninae). *Faunitaxys*, 13(52): 1 – 10. [https://doi.org/10.57800/faunitaxys-13\(52\)](https://doi.org/10.57800/faunitaxys-13(52))
- Xin F.-Y., Zhong X.-T. & Qi Z.-H., 2025. – Revealing a new subspecies of *Lucanus sericeus* Didier, 1925 (Coleoptera: Lucanidae) based on morphological comparison. *Faunitaxys*, 13(53): 1 – 13. [https://doi.org/10.57800/faunitaxys-13\(53\)](https://doi.org/10.57800/faunitaxys-13(53))
- Lin J.-Z., 2025. – Contribution to the taxonomic knowledge of the genus *Aesalus* Fabricius, 1801 (Coleoptera: Lucanidae), with description of a new species from Northern Taiwan. *Faunitaxys*, 13(54): 1 – 7. [https://doi.org/10.57800/faunitaxys-13\(54\)](https://doi.org/10.57800/faunitaxys-13(54))
- Sherwood D., Peyton J., Cairns-Wicks R., Fowler L., Geci D. & Balchin J., 2025. – Just the two of us: presence of a second species of non-native gecko of the genus *Hemidactylus* Goldfuss, 1820 (Squamata: Gekkonidae) confirmed on Saint Helena. *Faunitaxys*, 13(55): 1 – 5. [https://doi.org/10.57800/faunitaxys-13\(55\)](https://doi.org/10.57800/faunitaxys-13(55))
- Vives E., 2025. – Descripción de una nueva especie del genero *Mimocornuscoparia* Breuning, 1970, (Coleoptera, Cerambycidae, Lamiinae), procedente de Sulawesi, Indonesia. *Faunitaxys*, 13(56): 1 – 3. [https://doi.org/10.57800/faunitaxys-13\(56\)](https://doi.org/10.57800/faunitaxys-13(56))
- Lourenço W. R. & Velten J., 2025. – One more new species of *Betaburmesebuthus* Lourenço, 2015 trapped in Burmite (Scorpiones: Palaeoburmesebuthidae). *Faunitaxys*, 13(57): 1 – 4. [https://doi.org/10.57800/faunitaxys-13\(57\)](https://doi.org/10.57800/faunitaxys-13(57))
- Lourenço W. R. & Velten J., 2025. – A second species for the remarkable genus *Palaeobutheolus* Lourenço, 2025 from Burmese Cretaceous amber, and confirmation of its association to the extant family Buthidae (Scorpiones: Buthoidea). *Faunitaxys*, 13(58): 1 – 5. [https://doi.org/10.57800/faunitaxys-13\(58\)](https://doi.org/10.57800/faunitaxys-13(58))
- Lapèze J., 2025. – Four new species of spittlebugs from French Guiana of the genus *Maxantonia* and *Catrimania* (Hemiptera: Cercopoidea: Ischnorhinidae). *Faunitaxys*, 13(59): 1 – 16. [https://doi.org/10.57800/faunitaxys-13\(59\)](https://doi.org/10.57800/faunitaxys-13(59))
- Santos-Silva A., Bezark L. G. & Pérez-Flores O., 2025. – Cerambycidae (Coleoptera) from the James Cope collection. Part II: new species and new geographical records. *Faunitaxys*, 13(60): 1 – 20. [https://doi.org/10.57800/faunitaxys-13\(60\)](https://doi.org/10.57800/faunitaxys-13(60))
- Lourenço W. R. & Velten J., 2025. – The remarkable variability of the genus *Betaburmesebuthus* Lourenço, 2015 from Burmite; comments on newly confirmed morphological characters and description of a new species (Scorpiones: Palaeoburmesebuthidae). *Faunitaxys*, 13(61): 1 – 7. [https://doi.org/10.57800/faunitaxys-13\(61\)](https://doi.org/10.57800/faunitaxys-13(61))
- Háva J., Konvička O., Bobot L. & Brustel H., 2025. – A new *Entoxylon* Ancey, 1869 species from Spain (Coleoptera: Mycetophagidae: Esarcinae). *Faunitaxys*, 13(62): 1 – 8. [https://doi.org/10.57800/faunitaxys-13\(62\)](https://doi.org/10.57800/faunitaxys-13(62))
- Cerda J.-A., 2025. – Ctenuchina de Guyane française (2de partie). Les genres *Ptychotricos* - *Delphyre* - *Druceius* - *Aderithales* - *Moeschlerius* - *Hyaleucerea* - *Nitoris* & *Fraudulentus* (2d article). 18e note. *Faunitaxys*, 13(63): 1 – 17. [https://doi.org/10.57800/faunitaxys-13\(63\)](https://doi.org/10.57800/faunitaxys-13(63))
- Fleck G., 2026. – An approach to the taxonomy and phylogeny of Oxygastridae sensu Fleck, 2018 based on larval and imaginal morphology (Odonata: Anisoptera). *Faunitaxys*, 14(01): 1 – 11. [https://doi.org/10.57800/faunitaxys-14\(01\)](https://doi.org/10.57800/faunitaxys-14(01))
- Coache A. & Lacroix M., 2026. – Un nouveau Sericinae de l'archipel de Sao Tomé et Principe (Coleoptera, Scarabaeoidea, Sericinae). *Faunitaxys*, 14(02): 1 – 5. [https://doi.org/10.57800/faunitaxys-14\(02\)](https://doi.org/10.57800/faunitaxys-14(02))
- Deslisle G., 2026. – Birdwing Butterflies NOVA, Part I (Lepidoptera, Papilionidae, Troidini). *Faunitaxys*, 14(03): 1 – 53. [https://doi.org/10.57800/faunitaxys-14\(03\)](https://doi.org/10.57800/faunitaxys-14(03))
- Fleck G., 2026. – ERRATA: An approach to the taxonomy and phylogeny of Oxygastridae sensu Fleck, 2018 based on larval and imaginal morphology (Odonata : Anisoptera). *Faunitaxys*, 14(04): 1. [https://doi.org/10.57800/faunitaxys-14\(04\)](https://doi.org/10.57800/faunitaxys-14(04))
- Vives E., 2026. – Una nueva especie de *Nethinius* Fairmaire, procedente de la Isla Mauritius (Coleoptera, Cerambycidae, Disteniinae). *Faunitaxys*, 14(05): 1 – 2. [https://doi.org/10.57800/faunitaxys-14\(05\)](https://doi.org/10.57800/faunitaxys-14(05))

Faunitaxys est échangée avec les revues suivantes (« print versions »)

- Annali del Museo Civico di Storia Naturale G. Doria (Italie)
- Boletín de la Asociación española de Entomología (Espagne)
- Boletín de la Sociedad Andaluza de Entomología (Espagne)
- Bollettino del Museo di Storia Naturale di Venezia (Italie)
- Bulletin de la Société linnéenne de Lyon (France)
- Bulletin of Insectology (Italie)
- Heteropterus Rev. Entomol. (Espagne)
- Integrative Systematics (Allemagne)
- Israel Journal of Entomology (Israel)
- Klapalekiana (République Tchèque)
- Koleopterologische Rundschau (Allemagne)
- Memorie del Museo Civico di Storia Naturale di Verona (Italie)
- Nova Supplementa Entomologica (Allemagne)
- Proceedings of the Entomological Society of Washington (USA)
- Revue suisse de Zoologie (Suisse)
- Spixiana (Allemagne)
- Zoosystematica Rossica (Russie)

Faunitaxys

Volume 14, Numéro 06, Janvier 2026

SOMMAIRE

A propos du genre *Lepturgotrichona* Gilmour, 1957 (Coleoptera, Cerambycidae, Lamiinae).
Antonio Santos-Silva & Sergio Devesa 1 – 8

CONTENTS

On *Lepturgotrichona* Gilmour, 1957 (Coleoptera, Cerambycidae, Lamiinae).
Antonio Santos-Silva & Sergio Devesa 1 – 8



Illustration de la couverture :

Topes de Collantes, Sancti Spiritus, Cuba.

Crédits:

Sergio Devesa: 1-6; 8-11; 12-17 & couverture

Antonio Santos-Silva: 5, 7, 11; 18-19